

# TOURIST DRIVE

24  
75km



LISMORE, NIMBIN & MURWILLUMBAH  
visitlismore.com.au

BANGALOW, LISMORE & WOODBURN  
visitlismore.com.au

**Local Tip**  
Explore the towns and villages that connect the Northern Rivers Rail Trail. It's a must-do experience in the region, providing the freedom to roam, to explore and to enjoy yourself in nature. To plan your adventure visit [northernriversrailtrail.com.au](http://northernriversrailtrail.com.au)



**Murwillumbah**  
Backtrack to Kyogle Rd, turn left and drive 11kms to Murwillumbah. Visit the **Tweed Regional Gallery & Margaret Olley Art Centre** and explore **Gallery Downtown**, a precinct for emerging artists, housed in an industrial warehouse with shipping containers for pop-up exhibits. Visit **Murwillumbah Visitor Information Centre**, 284 Tweed Valley Way, South Murwillumbah. Here you'll also find the starting point for the Tweed section of the **Northern Rivers Rail Trail**.



**Local Tip**  
The popular **Uki Buttery Bazaar Market** is held on the third Sunday of the month at the old butter factory. The **Uki Craft & Produce Market** is held every Saturday morning at the Uki Hall.

**Uki**  
Backtrack along Clarrie Hall Dam Rd and turn right onto Kyogle Rd. Uki is nestled at the base of Wollumbin and home to a variety of galleries, cafes, a general store, vintage and curio shops. Mount Warning Hotel is a great place to admire the amazing views of **Wollumbin (Mt Warning) National Park**. This classic country pub offers a hearty counter meal menu.



**Clarrie Hall Dam and Cram's Farm**  
Continue on Blue Knob Rd to Kyogle Rd. Turn right towards Murwillumbah to the **Clarrie Hall Dam** turnout, about 3km south of Uki. Surrounded by over 900 hectares of forested land and Mt Jerusalem National Park, the scenic location is popular for photography, picnics, bush walking and bird watching. Activities permitted on the dam include canoeing, boating and fishing. There's picnic areas, BBQs and toilets. Further down the road (17km) is scenic **Cram's Farm**, with 14 hectares to explore, and a boat ramp for launching watercraft.

32  
90km

# TOURIST DRIVE

24  
75km



**Bangalow**  
Take the Bangalow exit off the Pacific Hwy or the Hinterland Way to this pretty town, rich in Federation charm. Its main street is lined with historic buildings, a very cool country pub, galleries, excellent local cafes and boutique shopping.

**Local Tip**  
Bangalow Parklands (Deacon St) is a large shady park set alongside Byron Creek with a charming rotunda, picnic tables, BBQs, toilets, and a wonderful natural playground. **Bangalow Markets** is held on the fourth Sunday of every month. Wander the hundreds of stalls beneath the huge camphor laurel trees at the Bangalow Showground.



**Clunes**  
Head west along Bangalow Rd for the 12-minute drive to the village of Clunes. Clunes boasts beautiful examples of Federation homes and early Australian church architecture. The **Clunes Village Park** is a great spot to stop with its lush trees and views across the valley towards Altonville. The general store and cafe houses a boutique cellar, post office, grocery and gift store offering local, sustainable and locally sourced produce and provisions. The cafe prides itself on its coffee and seasonal prices and houses a gift and curio shop inside the store.

**Local Tip**  
Clunes is home to a number of pottery and artist studios that typically open over the holidays and on weekends. Enquire at the general store to find out more!

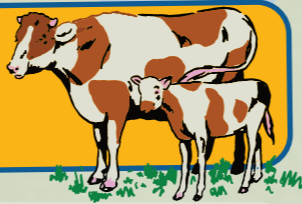


**Local Tip**  
Just west of Clunes, turn left onto Johnston Rd to the village of **Eltham**. Consisting of an art gallery and the Eltham Hotel, it's a great stopping point to enjoy country and hospitality at its best. From Eltham Village, continue west along Eltham Rd until you connect back onto Bangalow-Lismore Rd, turning left towards Bexhill.

Continue north for 7km to **Blue Knob Gallery and Cafe** (719 Blue Knob Rd), nestled below the sacred Aboriginal landmark of Lillian Rock. The gallery showcases local artists through a changing exhibition program. The gallery's cafe offers all day breakfast, lunch, snacks, cakes and coffee. It's a great place to stop and enjoy the mountain views of **Nightcap National Park**.

**Local Tip**  
Pop around to the **Nimbin Bush Theatre and Cafe** on the banks of Mulgum Creek. Check out their varied program of events, enjoy delicious food made on-site while admiring the art and gardens in the outdoor area. You may even spot a platypus in the creek! For events and What's On in Nimbin visit [nimbin.com.au](http://nimbin.com.au)

**Nimbin Culture, Coffee and Candles**  
Head north on Cullen St, turning right after Cullen Bridge to **Nimbin Candle Factory** and **Nimbin Bush Theatre and Cafe**. The candle factory has been making beautiful traditional, non-toxic candles using essential oils and vegetable dyes since 1973. See how the candles are made using the water-powered dipping deck inspired by equipment used in ancient monasteries.



**Local Tip**  
Visit **Nimbin Valley Dairy** at 392 Tuntable Falls Rd (Thurs to Sun, 10am-2pm). Enjoy great cheese and other delights while taking in the expansive valley views and experiencing a real working farm. It's the perfect place to picnic!

**Nimbin Recreation Precinct** includes a skatepark for skateboards, inline skates and BMX bikes with a snake run that drops into a larger bowl for all skill levels. There's lawn bowls, a playground with picnic and BBQ facilities, and a free swimming pool. The Rainbow Road Walking Track will also start and finish at the precinct.

**Local Tip**  
**Nimbin Markets** are held on the fourth and fifth Sundays of the month at the Nimbin Community Centre, offering a colourful collection of unique items, alternative therapies and live music. **Nimbin Farmers Market** is held every Wednesday at 39 Cullen St, from 3-6pm.



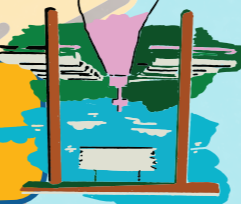
**Nimbin** is intriguing with its colourful mural streetscape and friendly local characters. Take your time to enjoy the alternative shops and pick up environmentally sustainable hemp products including fashion, cosmetics and herbal medicines. Visit the galleries for unique wares and works by local artists and indulge in Nimbin's food scene that is dynamic and vibrant just like the village where fresh produce reigns supreme. To find out more visit [nimbin.com.au](http://nimbin.com.au)



32  
90km

**Bexhill**  
Locals boast they have the "friendliest general store" in the Northern Rivers. Also famous for its homemade Indian curries and samosas, they also serve excellent coffee and have a great range of affordable local gifts. The deli next door is a must-see for foodies, especially cheese lovers. It boasts 100 varieties of cheese, along with continental groceries, meats and antipasto. They also make up hampers and delicious picnic baskets to enjoy on your travels. Stop in to sample their free cheese tastings offered daily!

**Local Tip**  
Visit the **Bexhill Open Air Cathedral** (Grace Rd) to enjoy the panoramic view. It's a popular spot for outdoor weddings and picnics, or a quiet place to ponder.



**City of Lismore**  
Continue along Bangalow Rd to Lismore, the dynamic and artistic heart of the Northern Rivers. The historic, leafy city centre houses an array of fascinating boutiques, antique and curio shops, galleries, street art, and diverse dining scene. Park alongside the **Lismore Regional Gallery** (Rural St) and **The Grand**, a beautiful greenspace in the heart of Lismore. To find out what exhibitions and events are on at the gallery, visit [lismoregallery.org](http://lismoregallery.org).



**Lismore Laneways and Back Alley Gallery**  
Walk the colourful laneways and marvel at the 60-plus artworks by local and national artists, or step inside a funky vintage phone booth to hear local stories and music. Some of the beloved public art includes in the heart, you are here, landmark by Holly Allen and Eden Crawford-Hartman. Have your photo taken with the heart, then share and tag #visitlismore



**Heritage Park** (Molesworth St, Lismore) is a paradise for kids and a treat for parents too. Take a ride on the wonderful miniature railway train that takes passengers on a circuit around the park. There's also lots of cleverly designed play equipment, a water park, as well as shelters, BBQs and toilets.



Lismore is also the entertainment capital of the region, the city offers everything from unique festivals and events to arts and culture, live music, performance and so much more. Check out **What's On** at [visitlismore.com.au](http://visitlismore.com.au)

**Local Tip**  
**Nimbin Soundtrail** is an audio experience, featuring 18 stories throughout the village. Download the 'Soundtrail App' and select Nimbin to enjoy!



**Nimbin, Australia's alternate lifestyle capital**  
Nimbin shot to fame in 1973 when it hosted the Aquarius Festival, attracting people from all over Australia. Many of them stayed on to live the dreams and ideology of Aquarius and to sow the seeds for today's vibrant community.

**Nimbin Rocks** will come into view just before Nimbin. There is a viewing area on the left just before the village where you can read about the towering rocks estimated to be 20 million years old. The site is of great cultural significance to the traditional Bundjalung Nation, and for that reason access is restricted to the Rocks.

**Local Tip**  
Stop at **Goolmangar** and visit the store that supplies just about everything to the local community, including barista coffee and a range of tasty treats.



**City of Lismore**  
Start in the heart of Lismore, at one of the city's most popular parks, **Heritage Park** (cnr Molesworth St and Bruxner Hwy). A paradise for kids and a treat for parents too with a water park and miniature railway train that takes passengers on a circuit around the park. There's also cleverly designed play equipment, shelters, BBQs and toilets. Depart Heritage Park, turning left onto Molesworth St, then left at the Woodlark St roundabout, crossing over the Wilsons River. Turn right at the first roundabout, onto Bridge St, then left at Terania St. Follow for 31kms to **Nimbin**.

Experience an alternate way of life on this road trip north of Lismore to Nimbin, where you'll be treated to artistic talents, delicious local produce, and beautiful views of three World Heritage-listed national parks, before winding your way along the Tweed River to Murwillumbah.

# TOURIST DRIVE

32  
90km

**The Koala Care Hospital** (23 Rifle Range Rd) conducts free educational tours where you can see koalas being rehabilitated. Tours operate Monday to Thursday at 2pm. Bookings essential, ph: 02 6621 4664.

24

Depart Lismore and head south along Wyalah Rd, stopping at the **Lismore Rainforest Botanic Gardens** (513 Wyalah Rd) to the Northern Rivers and are a wonderful place to explore and spot koalas, wallabies and birdlife. Continue along Wyalah Rd, Wyalah Ferry Rd and Coraki Rd towards Coraki.

**Local Tip**  
About 5.5km south of Wyalah village, on Wyalah Rd, stop at the **Aboriginal Bora Ring** at the back of the Tucki Tucki Cemetery. This sacred ceremonial site for the Bundjalung tribes of the region is estimated to be 300 years old. A further 2km down the road is the **Tucki Tucki Nature Reserve**, a koala haven planted by concerned locals in the 1950s to preserve the natural koala habitat. Look high in the trees to spot one of the sleepy locals!



Follow the Woodburn-Coraki Rd to Woodburn, known as "the traveller's rest", a peaceful town on the banks of the Richmond River. The town has a number of popular cafes, sailing, swimming, fishing and water skiing. The town has a number of popular cafes and eateries, a bakery and pub bistro while the riverside beach, park and picnic area provide the perfect spot to relax. The Bundjalung, Broadwater and Bungawalbin National Parks are a short drive from Woodburn, and the popular fishing and seaside town of **Evans Head** is only a ten-minute drive away.

This tourist guide was designed by Luke Player in collaboration with the Lismore City Council Destination Team.

visitlismore.com.au @liskeplayer



# Porters N.S.W

# Rivers



TO GOLD COAST

Murwillumbah

**TOURIST DRIVE 32**  
90km

Wollumbin National Park

Uki

Nightcap National Park

Burrumbidgee

Kunghur

The Channon

Jimbin

TO KYOGLE & THE BORDER RANGES

Lismore

**TOURIST DRIVE 32**

Goolmangar

**TOURIST DRIVE 24**  
75km

Lismore

TO CASINO

Bangalow

Glunes

Eltham

Bexhill

BRUXNER HWY

GOONELLABAH

BRUXNER HWY

TATHAM • CORAKI ROAD

Coraki

Woodburn

TO GRAFTON

BRUNSWICK HEADS

BYRON BAY

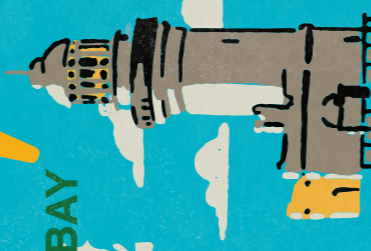
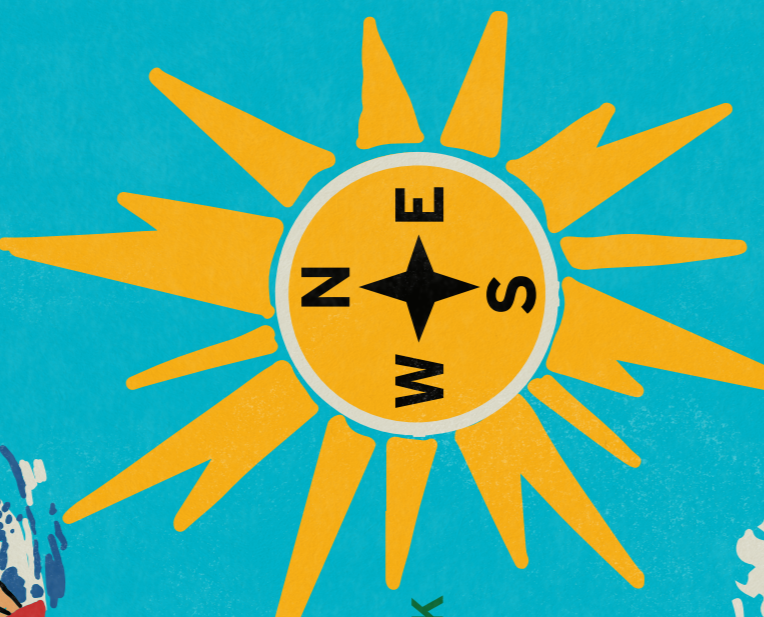
LENNOX HEAD

BALLINA

WARDELL

BROADWATER

EVANS HEAD



KINGSCLIFF

MOOBALL

BURRINGBAR

MINYON FALLS

PROTESTORS FALLS

FEDERAL

NEWRYBAR

LENNOX HEAD

BALLINA

BROADWATER

EVANS HEAD

GOLD COAST

Murwillumbah

MOOBALL

BURRINGBAR

MINYON FALLS

PROTESTORS FALLS

FEDERAL

NEWRYBAR

LENNOX HEAD

BALLINA

BROADWATER

EVANS HEAD

GOLD COAST

Murwillumbah

MOOBALL

BURRINGBAR

MINYON FALLS

PROTESTORS FALLS

FEDERAL

NEWRYBAR

LENNOX HEAD

BALLINA

BROADWATER

EVANS HEAD

GOLD COAST

Murwillumbah

MOOBALL

BURRINGBAR

MINYON FALLS

PROTESTORS FALLS

FEDERAL

NEWRYBAR

LENNOX HEAD

BALLINA

BROADWATER

EVANS HEAD

GOLD COAST

Murwillumbah

MOOBALL

BURRINGBAR

MINYON FALLS

PROTESTORS FALLS

FEDERAL

NEWRYBAR

LENNOX HEAD

BALLINA

BROADWATER

EVANS HEAD

GOLD COAST

Murwillumbah

MOOBALL

BURRINGBAR

MINYON FALLS

PROTESTORS FALLS

FEDERAL

NEWRYBAR

LENNOX HEAD

BALLINA

BROADWATER

EVANS HEAD

GOLD COAST

Murwillumbah

MOOBALL

BURRINGBAR

MINYON FALLS

PROTESTORS FALLS

FEDERAL

NEWRYBAR

LENNOX HEAD

BALLINA

BROADWATER

EVANS HEAD

GOLD COAST

Murwillumbah

MOOBALL

BURRINGBAR

MINYON FALLS

PROTESTORS FALLS

FEDERAL

NEWRYBAR

LENNOX HEAD

BALLINA

BROADWATER

EVANS HEAD

GOLD COAST

Murwillumbah

MOOBALL

BURRINGBAR

MINYON FALLS

PROTESTORS FALLS

FEDERAL

NEWRYBAR

LENNOX HEAD

BALLINA

BROADWATER

EVANS HEAD

GOLD COAST

Murwillumbah

MOOBALL

BURRINGBAR

MINYON FALLS

PROTESTORS FALLS

FEDERAL

NEWRYBAR

LENNOX HEAD

BALLINA

BROADWATER

EVANS HEAD

GOLD COAST

Murwillumbah

MOOBALL

BURRINGBAR

MINYON FALLS

PROTESTORS FALLS

FEDERAL

NEWRYBAR

LENNOX HEAD

BALLINA

BROADWATER

EVANS HEAD

GOLD COAST

Murwillumbah

MOOBALL

BURRINGBAR

MINYON FALLS

PROTESTORS FALLS

FEDERAL

NEWRYBAR

LENNOX HEAD

BALLINA

BROADWATER

EVANS HEAD

GOLD COAST

Murwillumbah

MOOBALL

BURRINGBAR

MINYON FALLS

PROTESTORS FALLS

FEDERAL

NEWRYBAR

LENNOX HEAD

BALLINA

BROADWATER

EVANS HEAD

GOLD COAST

Murwillumbah

MOOBALL

BURRINGBAR

MINYON FALLS

PROTESTORS FALLS

FEDERAL

NEWRYBAR

LENNOX HEAD

BALLINA

BROADWATER

EVANS HEAD

GOLD COAST

Murwillumbah

MOOBALL

BURRINGBAR

MINYON FALLS

PROTESTORS FALLS

FEDERAL

NEWRYBAR

LENNOX HEAD

BALLINA

BROADWATER

EVANS HEAD

GOLD COAST

Murwillumbah

MOOBALL

BURRINGBAR

MINYON FALLS

PROTESTORS FALLS

FEDERAL

NEWRYBAR

LENNOX HEAD

BALLINA

BROADWATER

EVANS HEAD

GOLD COAST

Murwillumbah

MOOBALL

BURRINGBAR

MINYON FALLS

PROTESTORS FALLS

FEDERAL

NEWRYBAR

LENNOX HEAD

BALLINA

BROADWATER

EVANS HEAD

GOLD COAST

Murwillumbah

MOOBALL

BURRINGBAR

MINYON FALLS

PROTESTORS FALLS

FEDERAL

NEWRYBAR

LENNOX HEAD

BALLINA

BROADWATER

EVANS HEAD

GOLD COAST

Murwillumbah

MOOBALL

BURRINGBAR

MINYON FALLS

PROTESTORS FALLS

FEDERAL

NEWRYBAR

LENNOX HEAD

BALLINA

BROADWATER

EVANS HEAD

GOLD COAST

Murwillumbah

MOOBALL

BURRINGBAR

MINYON FALLS

PROTESTORS FALLS

FEDERAL

NEWRYBAR

LENNOX HEAD

BALLINA